

RAUCKMAN™ **Utility Products**

www.rauckmanutility.com

METERPULLER® **OWNER/OPERATOR MANUAL**



WARNING

Carefully read, understand and follow the warnings and instructions provided in this manual, and keep it in a safe place for future reference. Failure to do so can result in accident, severe personal injury or death.

If there are any questions regarding these or any of our other fine products, please contact us at www.rauckmanutility.com or call us at 618-234-0001 from 8-5 CST.



WARNING

ELECTROCUTION HAZARD

Avoid Personal Injury or Death. Do not use this tool until you have completely read the owner's manual.

Also see www.rauckmanutility.com for safety information.

I. Preliminary

1. The safety of the tool and of the work site are the responsibility of the worker and his supervisors, who are the only individuals who can evaluate whether it is safe to work.

II. General Instructions

1. All workers are required to wear proper Personal Protection Equipment (PPE), to be identified and provided by the Employer or otherwise mandated by applicable Regulations.
2. PPE shall be used at all times, without exception.
3. All workers must be trained and determined to be qualified on the use of the tools, on accident risks, safety devices, accident prevention procedures and applicable regulations. **The qualified worker is defined as one who demonstrates skills and knowledge related to the construction and operation of electric equipment and installations and has received safety training to identify the hazards and reduce the associated risk.**
4. Never allow bystanders near the work area.
5. Immediately alert your supervisor of any hazardous conditions or irregularities which could result in an accident, even if the chance of an accident is slim.
6. In the event of any unforeseen, unanticipated or unexpected situation or occurrence of any type during work, immediately stop work and evacuate the area. Notify appropriate supervising personnel.
7. Electrical shock can result if the user fails to maintain a safe and proper Minimum Approach Distance (MAD) as mandated by OSHA, local regulators, or employer work rules, whichever is greatest.
8. Tools should not be laid on the ground because of possible moisture contamination or wetting.

III. Before Each Use

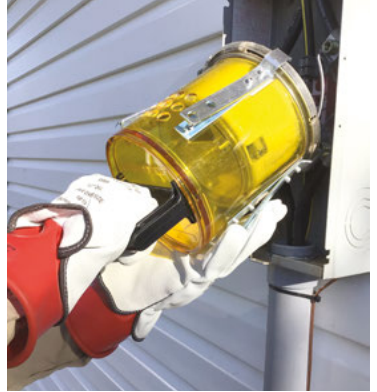
1. If any defect, contamination, or other issue is noted which could possibly adversely affect mechanical integrity of the tool, DO NOT USE THE TOOL.



The Rauckman Utility Products METERPULLER® makes the task of installing and removing electric meters easier and safer. It reduces potential injuries by encapsulating the meter and giving the worker a solid handle for removal and installation of these devices.

Made in the USA, it is

constructed of a durable polycarbonate material with chrome plated clips that hold the meter in place. It features a solid hand barrier, and vent holes located close to the engagement clips to divert hot gas.



The amber colored M-001 is designed for residential meters and will fit "A" base meters, single phase ring type meters and single phase ringless meters.

The M-002A is orange and will work on residential meters, and commercial poly-phase ring type and ringless meters.



M-001



M-002A



USING THE RAUCKMAN METERPULLER®

Inspect and clear the work area around the meter of any items or debris that may conflict with the operation.



Secure and inspect the appropriate Personal Protective Equipment (PPE) per your company safety rules. (See *page 2 for more information*). This may include the arc flash protective clothing, hard hat, face shield/glasses and rubber gloves with leather protectors. Your company work rules and practices must be followed at all times when using this product.

The Rauckman METERPULLER® is a tool to ease the removal and installation of electric meters, both residential and commercial. It is not, nor should it be considered to be part of the PPE required to complete this task.



Carefully inspect the Rauckman METERPULLER® before each use. Any tool must be removed from service immediately for repair or replacement that exhibits conditions such as;



- Cracked or damaged polycarbonate material
- Loose or bent engagement clips
- Loose handle or plugged vent holes

METER REMOVAL USING THE RAUCKMAN UTILITY PRODUCTS M-001/M-002A

Slide the METERPULLER® over the meter, and push into place until the clips snap over the meter's metal band, or the bottom of the meter.

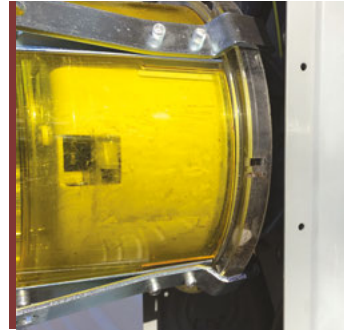
Caution: If you are unable to secure the METERPULLER® with the clips engaged, do not proceed to the next step.

Once the METERPULLER® is secure on the meter, rock the meter up and down slightly to loosen the connections. Do not use any side to side motion as this may damage the connections or the base.

When the meter is loose, simply tilt it down to break the top contact and pull it away from the base in one smooth motion.

Using the M-002A is essentially the same, only additional care must be taken due to higher amperages and heavier connections.

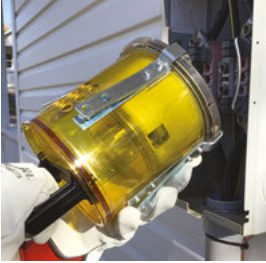
If the meter is so equipped with a by-pass lever it should be placed into the open position.



METER INSTALLATION USING THE RAUCKMAN UTILITY PRODUCTS M-001/M-002A



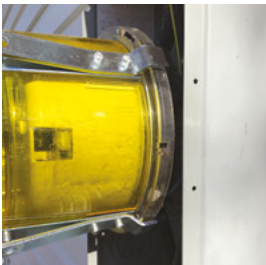
Snap the meter into the device. Verify the clips are over the base of the meter and it is secure in the device.



Carefully align the meter to the contacts, then push the bottom into the base and tilt the meter up to engage the contacts in one smooth motion.



Verify the meter is correctly aligned and fully engaged into the meter base.



Use of the M-002A is essentially the same as the M-001.

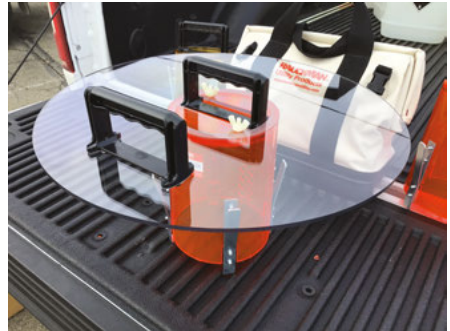
After verifying the correct alignment and installation of the meter simply push the clips in to release the meter from the unit and carefully remove the METERPULLER® from the meter.

When removing the Rauckman METERPULLER®, be careful not to either damage the meter or alter the alignment.



OPTIONAL ARC SHIELD

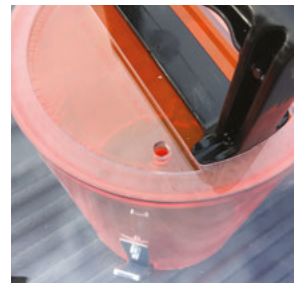
The MPS-002A Arc Shield is a polycarbonate disc that is sold separately and may be installed on either M-001 or M-002A Meterpullers®. It keeps the hands away from the meter base and offers protection for the body and hands in a flash event.



INSTALLING THE ARC SHIELD

- Place the Arc Shield on top of the METERPULLER®, inserting the ring on top of the Meterpuller into the slot under the Arc Shield.
- Use the two holes in the disc to mark the placement of the bolt holes.
- Use a ¼" bit to drill the two holes.
- Insert the nylon bolts from inside the METERPULLER®, and finger tighten the wing nuts

The operation of the M-001 and M-002A is unchanged with the addition of the MPS-002A Arc Shield.



TIPS FOR USING THE RAUCKMAN METERPULLER®

- Do not use or in any way consider the Rauckman Utility Products METERPULLER® a load-break or load-make device.
- Inspect the meter panel for any smells, stains, sounds that may indicate damage that could affect the safe removal or installation of the meter.
- Always wear the appropriate PPE from the beginning of the operation until it is completed.

LIMITED WARRANTY

COVERAGE-RAUCKMAN UTILITY PRODUCTS ("RAUCKMAN") warrants that each RAUCKMAN product purchased from RAUCKMAN or an authorized RAUCKMAN retailer when properly used will be free from defects in material and workmanship for a period of 1 year (12 months) from the date of purchase. The Purchaser's sole and exclusive remedy under this limited warranty for the defects in a RAUCKMAN product shall be the repair or replacement, in RAUCKMAN'S sole discretion, of the defective part or component.

NOT COVERED-This limited warranty does not apply to, and RAUCKMAN shall have no liability or responsibility in respect of, damages, or expenses relating to the defects caused by the failure to use, maintain or store the RAUCKMAN product as specified in the manuals or other literature supplied with the product.

This limited warranty does not apply to, and RAUCKMAN shall have no liability or responsibility of, damages or expenses relating to:

- A product purchased from a party other than RAUCKMAN or an authorized RAUCKMAN reseller.
- A product altered or modified from factory specifications
- Accidents, abuse or improper use, lack or reasonable or proper maintenance, repairs improperly performed or replacement parts or accessories not conforming to RAUCKMAN'S specifications and/or normal wear or deterioration occasioned by the use of the product.
- A RAUCKMAN product which has been misused, operated in a negligent manner, operated contrary to any instructions furnished by RAUCKMAN or operated in violation of applicable law regulations; and
- Loss of time, loss of use, inconvenience, substitution costs or compensation for the inconvenience or loss of use while the product is being repaired or other matters not specifically covered hereunder.

PROCEDURE-In the event of a defect covered by this limited warranty, the Purchaser shall contact RAUCKMAN within ten (10) days of discovery of the defect. To obtain warranty service for your RAUCKMAN product, your specific and detailed claim must be reported to and received by RAUCKMAN within the applicable warranty period. The purchaser is responsible for all expenses associated with the transporting the RAUCKMAN product to and from the RAUCKMAN service location.

DAMAGES-Except as expressly provided by this warranty RAUCKMAN SHALL NOT BE RESPONSIBLE FOR ANY INCIDENTAL OR CONSEQUENTIAL DAMAGES ASSOCIATED WITH THE USE OF THE RAUCKMAN PRODUCT OR A CLAIM UNDER THIS AGREEMENT, WHETHER

THE CLAIM IS BASED ON CONTRACT, TORT OR OTHERWISE. The foregoing statements of warranty are exclusive and lieu of all other remedies. Some states do not allow the exclusion or limitation of incidental damages so this limitation or exclusion may not apply to you.

DISCLAIMER-ANY IMPLIED WARRANTY OF MERCHANTABILITY OR FITNESS FOR A PARTICULAR PURPOSE AND ALL IMPLIED WARRANTIES ARISING FROM A COURSE OF DEALING, USAGE OF TRADE, BY STATUTE OR OTHERWISE, IS HEREBY STRICTLY LIMITED TO THE TERMS OF THIS WRITTEN WARRANTY. This Agreement shall be the sole and exclusive remedy available to the Purchaser with respect to this purchase. In the event of any alleged breach of any warranty or any legal action brought by the purchaser based on the alleged negligence or other tortious conduct by RAUCKMAN, the Purchaser's sole and exclusive remedy will be the repair or replacement of the defective materials as stated above. No dealer and no other agent or employee of RAUCKMAN is authorized to modify, extend, or enlarge this warranty.

TRANSFER OF LIMITED WARRANTY-This warranty is made by RAUCKMAN with only the original purchaser of the product and does not extend to any third parties. The unexpired portion of this limited warranty may not be transferred to a second purchaser.

APPLICABLE LAW-This warranty is governed by the laws of the State of Illinois. The exclusive jurisdiction and venue for any court action commenced by you under or relating to this limited warranty or any implied warranty (ies) shall be decided in the State Courts of Illinois, County of St. Clair. In the event RAUCKMAN prevails in any court action, you agree to reimburse RAUCKMAN for the expenses, including attorney's fees and expenses of litigation, reasonably incurred by RAUCKMAN defending your claim.

OTHER RIGHTS-Your acceptance of delivery of the warranted RAUCKMAN product constitutes your acceptance of the terms of this limited warranty. This warranty gives you the specific legal rights, and you may also have other rights which may vary from state to state and country to country.

ENTIRE AGREEMENT-This document contains the entire warranty given by RAUCKMAN in respect of your RAUCKMAN product and there are no terms, promises, conditions, or warranties regarding your RAUCKMAN product other than those contained herein. RAUCKMAN specifically does not authorize any person to extend the time or scope of this warranty or to create or assume for RAUCKMAN any other obligation or liability with respect to RAUCKMAN products.

RAUCKMANTM
Utility Products

www.rauckmanutility.com • info@rauckman.com

33 Empire Dr., Belleville, IL 62220

618-234-0001